

# ITANYAN



*"To grow by reason"*

NORTHEAST METRO BRANCH

VOLUME 33, NO.9  
JUNE, 2011



**Congratulations  
and  
Thanks to our  
New Officers**

**Co-Presidents:**

**Jan Femrite and Joan Macheledt**

**Vice President for Membership:**

**Gail VanHorn and Nancy FitzGerald**

**Vice-President for Program;**

**Robbie Johnson**

**Secretary:**

**Kathy Burluson**

**Co-Treasurers:**

**Linda Ruggles and Doris Morrison**

## JUNE PROGRAM

**NORTHEAST METRO AAUW**

**THURSDAY, JUNE 9, 2011 MEETING**

We will meet at 6:00 PM at Christine Johnson's home for a salad supper.

Board members will bring greens and dressings. Members are to bring 2 ingredients for salad, be creative.

Christine will provide: beverages, dishes, silverware and napkins.

Weather permitting we will be outside, if not, we will move inside.

Our Century Scholarship winner will be introduced.

Bring guests.

### **Directions for Salad Supper**

**Address: 12541 Homestead Drive,**

**Phone 651-426-1233.**

**Grey house with dark grey roof.**

The directions to Christine Johnson's home are:

#### **From downtown White Bear Lake:**

Take Hwy 61 north to Hwy 96 east, turn right onto Hwy 96, go approx. 1 mile to Portland Ave, turn left, go 1 1/2 miles to Short Street or Washington County 7, turn right, go 2 1/2 miles to Sunset Lake, turn left on 125th Street, follow along the lake to the first street, Homestead Drive, turn right, 2nd house on right.

#### **From Hugo:**

Take Hwy 61 south to Washington County 8, turn left, to Goodview Ave, turn right, go to 125th Street, turn left, go to Homestead Drive, turn left, 2nd house on right.

### **Look for in this Issue**

Page 2 Minutes May Meeting

Page 3 Doris' Convention  
Observations

Page 6 AAUW Funds

Page 7 Membership,  
Gourmet,  
Book Club

## Minutes of the May 12, 2011 NE Metro AAUW Meeting

**Program:** Continuing with the theme of **Women Who Have Made a Difference**, our program was presented by Prudence Johnson who performed "songs of women through the centuries".

**Business Meeting:** The business meeting was called to order at 8:00 PM by president, Kathy Burleson. Robbie Johnson introduced her guest, Chris Koentopp, who is joining our branch. A motion to approve the agenda was approved. The minutes of the April meeting were approved as printed in the *Itanyan*. Robbie reported on recent correspondence. She received a thank you letter from the East Metro Women's Council. They were very grateful for the birthday boxes and wondered if we'd consider making "welcome baskets" next year. These would be given to new residents as they set up housekeeping. She also received a thank you from the Mahtomedi food shelf for the extra cake and frosting mixes that weren't used in the birthday boxes. She also received a letter from Richard Strom requesting contributions to the Communication Center for the State Services for the Blind.

**Treasurers' report:** Linda Ruggles reported we have \$1,773.61 in checking and \$3,066.39 in savings. Linda also received a request for a contribution to the "Adopt a Scholar" campaign. This would support two students (Maggie Schmidt and Carly Zimmerman) who were among the winners at the 2011 Minnesota History Day competition. They will be participating in the national competition in June in Washington, DC. Each student is hoping to raise approximately \$1,000 to cover travel expenses. Nancy Hendrickson mentioned that Lakeshore Players is in need of scholarship donations for deserving students in their summer programs. Linda reported that we have \$150 still available in our scholarship/other donations category. A motion was made by Vernita Kennen and seconded by Christine Johnson that the branch send a \$50 donation to the Communication Center, State Services for the Blind; a \$50 donation to the Lakeshore Players scholarship fund; and \$25 each to the Minnesota History Day Scholars (Maggie Schmidt & Carly Zimmerman) Motion carried.

### Committee reports:

**Membership:** Clara mentioned that Chris Koentopp joined our branch tonight. She also reminded us to pay our 2011-12 dues which are \$78.

**Program:** The June meeting will be a salad supper at Christine Johnson's home. Robbie is working on program ideas for 2011-12 and suggested using a diversity theme.

**Itanyan:** Items for the *Itanyan* need to be sent to LouAnn by the 20<sup>th</sup> of the month.

**Nominating Committee:** Christine Johnson presented a nominating committee report update. Jan Femrite and Joan Macheltdt will be Co-President candidates and Kathy Burleson will be the secretary candidate. A motion to accept the slate as presented was approved. (Gail VanHorn and Nancy FitzGerald were previously elected Co-Vice President for Membership.)

**Scholarship:** Nancy FitzGerald reported that our scholarship recipient has been selected and will be invited to our June 9<sup>th</sup> Salad supper.

**President's Report/Unfinished Business:** Kathy reported on the State Convention. The proposal to move to a every other year state convention has been sent to a committee to determine feasibility. The committee will report back next year. Our branch received an award for increasing membership 2.8%. We also received 3rd place in the newsletter category. All members should have received the 2011 AAUW ballot and are encouraged to vote electronically. Paper ballots will also be accepted. Carol Sheggeby expressed concerns about #6 and #8 on the ballot related to funds of branches that dissolve.

**Announcements:** On Lynda Halbert's behalf, Clara reminded us of the May 18<sup>th</sup> library class at Century College. There will also be a Job Seekers Open House on May 19<sup>th</sup>. Kathy updated us on her husband's treatment for testicular cancer. Dave is finishing his radiation treatments. Kathy raised more than \$700 in the Relay for Life event. The Hamline event raised more than \$15,000.

The business meeting was adjourned at 8:35 p.m. Respectfully submitted, Barb Qualey, Secretary

**My notes from attending the AAUW MN  
State Convention  
April 29<sup>th</sup> through May 1<sup>st</sup>, 2011**

**Day 1**, my adventure began in La Crosse, Wisconsin Friday morning with the entering of Riverport Inn, Winona, Minnesota into the GPS. It showed 28 miles. Hmmm ... that meant there was time to do a couple of errands before meeting up with my AAUW friends. I was amongst the first conventioneer to arrive. The hotel staff very kindly helped me check out a few local "things to do" with our afternoon. LouAnn, member of the State Board of Directors, had an afternoon board meeting. Clara and Joni came down early with her. After Clara and Joni were settled in their room we agreed our adventure for the afternoon would be to check out shops listed in the Bluff Country Studio Art Tour of SE Minnesota ([www.bluffcountrystudioarttour.com](http://www.bluffcountrystudioarttour.com)). Annually artists in southeast Minnesota, southwest Wisconsin and northeast Iowa have created a route of artist showings in local shops. The artist is present and we discovered was often demonstrating their art form. We just happened to be in Winona for the right week end *and* there were three galleries right in town to explore!

We entered the first destination, Magnolias, into the GPS. We got lost, sort of, so much for technology. Slowly driving up and down the streets looking for our first destination we saw an intriguing shop called "Piece of the Past" advertising "new Furniture with an Old Soul." Well that looked good to us so we stopped. There was country style furniture, household gifts, and antiques. Chatting with the owner about antiques we couldn't identify she

explained her niche, the furniture in her place was hand made from dismantled barns and buildings. Her semi-retired parents had started the store and furniture factory back in the 1970's. She runs the store where as her brothers make the furniture under her Father's watchful eye. She kindly got us started back on our path to the art show. Apparently not all artists listed were the names on the galleries. So we needed to watch for white sandwich style signs with red lettering designating "Art Show."

The lithograph artist we visited next was enthusiastic to have visitors. Dan Grimslid, Stone Lithographer, brought Clara, Joni, and I into his shop area showing us the printer which he and his brother hand built. He imports 300 pound stones used in his technique and explained his fascinating lithograph process in detail. When other visitors to his show arrived we proceeded to our next destination. Make note, this was a studio I will come back to with a childhood friend who appreciates lithographic artistry.

On our way to find the Magnolias Gallery listed in the brochure we saw a sandwich board depicting *another* gallery in the art show. In the front of the Blue Heron Gallery Joni and I each picked out our favorite abstract paintings. The gallery owner, Julia Crozier directed us to the back of her shop to talk with another painter, Karen Lewis, sharing her shop for the show. Unfortunately Karen was taking a break from her paintings which were what I would call whimsical water color abstracts. They were bright depictions of the artist imagination of under water and landscape scenes.

We again sought out the Magnolias gallery only to discover it was closed. Being late afternoon our adventure took a change in direction to Sugar Loaf Bluff, an antique shop we could see from our hotel. The store is partially housed in bluff caves which we found interesting. There was a lot to see. However, the caves were damp, well actually dripping water into buckets, so we declined to venture down those paths. We had fun drifting through the antiques pointing out items of interest and sharing our stories. When the shop closed at 5:00 pm we headed back to the hotel to meet up with Nancy FitzGerald.

After a quick dinner, LouAnn, Nancy, Clara, Joni and I headed to what I considered to be the highlight of the convention events, a Welcoming Reception and Eleanor Roosevelt fundraiser at the *Minnesota Marine Art Museum*. Wow what a treasure: I had anticipated marine artifacts. What we saw was paintings; Monet, Georgia O'Kieff, ... Strolling through the paintings the gallery staff engaged attendees pointing out favorites invitint us to stop and enjoy the different perspectives of pieces by looking at them from different angles and with some effects of changes in lighting. The setting was enthralling as the Minneapolis Institute of Arts. We stayed along with our NE Metro Branch Priesident Kathy and her Mom until closing.

**Day 2** began at 6:30 am with a continental breakfast followed by the opening ceremony with the local Girl Scouts Flag Presentation. Dads and Moms were ready with cameras and video recorders capture shops of daughters leading this group of women in the pledge of allegiance. The convention began with welcoming comments by AAUW State President, Carol Sheggeby and the Winona City Council via Debbie White. Our Keynote speaker, Rachelle Schultz, CEO of Winona Health spoke about women's health care

issues past, present and her projections for the future.

Next was the business meeting in which we went through standard annual business including discussing the only resolution addressing we change from an annual state convention to a biennial. After an amendment to the resolution it passed giving permission for the state board to appoint "... a special committee (\*) to examine the economic and organizational values of a biennial state convention ...". The discussion surrounding the resolution passing pointed out many aspects on how this decision would impact our organization. It was concluded the decision needs very careful consideration.

After a short break to stretch and lay out your branch silent auction items in the designated area, a buffet lunch was set up. LAF plaintiff, Dr. Lulu Sun spoke on her alleged sex and race discrimination suit against the University of Massachusetts, Dartmouth. She presented many facts to support her case. Her circumstances are similar to too many speakers we have unfortunately heard over the years. Listening to her plight makes one wonder if the discrimination against women in the work place will ever end and reminds us of those forgotten women fighting for all of us to be treated fairly.

Annual awards and recognitions were presented including recognition to our NE Metro branch for the work done by our Co-Membership Chairs Clara Gray and Joni Henry who increased our membership in the past year; Way to go ladies!

Workshops began after lunch. In a separate article the Counterpart workshop on AAUW funds, which I attended is described. My second workshop session was "Intro to T'ai Chi, Chi Gong and Acupuncture. This was an interactive workshop. The group was split between



Front L to R: Joan Henry, Doris Morrison, Nancy FitzGerald, LouAnn Hoppe.  
Back: Kathy Burleson, Clara Gray, Barb Wonson-Luikkonen

presenters with the intention of switching half way through to the other presenter. Unfortunately the time line didn't allow the switch. I did get to experience Acupuncture in my hand to relieve shoulder blade pain. It was interesting how it worked.

After a break to refresh ourselves the Silent Auction and Social Hour began at 4:30 pm. Barb Wonson-Luikkonen had donated a beautiful quilt and my daughter Anna had donated hand turned wood items (honey dipper, Scottish porridge stirrer and Tulip bulb planter) to our cause. I didn't catch the final bids on the items. When I last looked the branch total I believe had exceeded \$60.

The evening Banquet concluded the day with story teller Kenny Salwey entertaining us with his stories as "the last river rat." Twisted

was breakfast, meditation, and walking for Day 3 with no anticipated business, all of our members with the exception of Kathy (who was enjoying a Mother-daughter week end) left after the banquet.

Nancy, Joni and LouAnn joined me at my place in La Crosse for Saturday night. Sunday morning I gave them a mini-tour of the area. We stopped at the Pearl Street Eatery to enjoy home made ice cream cones. The afternoon and evening we kicked back and relaxed.

\* The AAUW MN State Board of Directors is seeking volunteers to sit on the committee. If interested please notify LouAnn Hoppe.

Respectfully submitted,  
Doris Morrison  
Branch delegate to 2011 state convention

## Do we or don't we designate where our donations into AAUW should go?

By Doris Morrison

OK, I really wanted to attend the seminar at the AAUW Minnesota State Convention titled Osteoporosis: Women and Bone Health Study Results. Unfortunately the speaker had a family emergency. So, change of plan to an unexpectedly *informative* Counterparts breakout sessions on AAUW funds.

Tidbits I found interesting that you may want to be aware of as a NE Metro, MN, AAUW Branch member which could help promote our organization with your family & friends;

- AAUW manages over \$130,000,000 in endowments. These funds were previously under the Education Foundation and today continue being used in similar fashion as in the past for grants, scholarships plus branch projects like Voices & Echoes all of which will promote our organization's causes.
- Once the designated amount of a named fund is reached, AAUW only spends the profits creating a perpetual fund that goes forever
- \$46 of your National Dues are tax deductible under the C3 regulations which is a result of resent restricting of AAUW, the Educational Foundation and LAF.

Designation of funds branches donates into AAUW has gone through a major overhaul in the past few years. Until now I have never given much thought to whether or not our branch should designate where we would like our contributions from fundraisers to end up. Sending funds into AAUW without designating where we want them to go puts the funds into a general "unrestricted" pool of money. As a branch we can get very specific on where our fundraiser proceeds go. After listening to the seminar speakers from the Minnesota State and Association levels I am promoting proceeds NE Metro raises go into the Educational Opportunities Fund specifying the *Jane Skinner American Fellowship # 4203*. Jane Skinner was a woman from Minnesota like you and I. \$10,000 was donated in her name to start a fund within AAUW years ago. Until the Jane Skinner fund reaches \$100,000 the funds cannot be used for the benefit of AAUW. The money basically sits out there accumulating interest and/or waiting for more donations towards the funds. But there are not "profits" yet to support our AAUW grants, projects or programs.

It is my hope that one of my fellow members to the NE Metro MN Branch will come forward in my absence from monthly branch business meetings and move to direct our treasurer to submit to Association any undesignated proceeds go to the Jane Skinner American Fellowship # 4203.

View of the  
Mississippi River from  
Doris Morrison's deck.

Isn't it just grand!



## Membership News

### IT'S DUES TIME!

**If you haven't paid your 2011-2012 AAUW dues yet, now is the time! Association dues are \$49, State \$9, and Northeast Metro Branch \$20, for a total of \$78, payable to Northeast Metro Branch AAUW.**

It really helps our treasurer to have time to process our dues before the June deadline. Thanks to all who have already responded. It saves us (and you) reminder calls and makes the treasurer's job easier

It seems early, but the deadline for Association to receive our dues is June. Our treasurer will need time to compile our dues record and get it in time. Our goal is to have all members pay by the June 9 salad supper.

Please bring your dues to the June meeting, or mail your dues to either: **Please !**

Clara Gray, 3958 Cranbrook, White Bear Lake, MN 55110 or

Joni Henry, 3511 Golfview Drive, White Bear Lake, Mn 55110.

\$78 includes Association, State, and our local branch.

---

### Gourmet Club

Gourmet Club is looking forward to having more members join them for wonderful foods based on a theme of culture study. Guests are always welcome. Please call or email your reservation to:

Donna and Dick Wen

[rydbwen@cpinternet.com](mailto:rydbwen@cpinternet.com)

651-636-2401

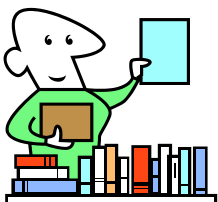
Our final dinner for the season traditionally has been a picnic. This year we will be meeting at the home of Donna and Dick Wen on June 12 6:00 for a Texas BBQ. It should be great fun and delicious.

---

### Book Club

Book Club meets on Saturday mornings at 10:00. refreshments are served and lively discussion of literature follows. It's a lovely way to spend a few hours and we invite all to join us for as many of the discussions as possible. Call the hostess if you plan to attend.

June 18      Out Stealing Horses by Per Petterson at the home of Linda Ruggles



Please bring suggestions for books for next year. We are always looking for new members as it makes the discussions so much richer.

The group is looking for an interesting place to visit in relation to a book we may read. if you have a suggestion, contact one of the book club members.



LouAnn Hoppe  
3754 White Bear Avenue  
White Bear Lake, MN 55110

**AAUW • 1111 Sixteenth St. NW • Washington, DC 20036 • 202/785-7700 • 800/326-AAUW • [connect@aauw.org](mailto:connect@aauw.org) • CFC #11319**

For Minnesota information contact: <http://www.aauwmn.org/>  
For Twin Cities area branches membership info,  
check out our [Metro Guide](#).



Minnesota has a membership of over 2,000 in our [30 branches](#) spread over the state. It's a dynamic organization with a long record of affecting change on issues of importance to women, such as education, equity in the workplace and sex discrimination. Branches maintain a variety of programs and projects throughout the academic year, with lighter schedules in the summer.

**Our Mission** AAUW advances equity for women and girls through advocacy, education, philanthropy, and research.

**Vision Statement** AAUW will be a powerful advocate and visible leader in equity and education through research, philanthropy, and measurable change in critical areas impacting the lives of women and girls.

**Diversity Statement** In principle and in practice, AAUW values and seeks a diverse membership. There shall be no barriers to full participation in this organization on the basis of gender, race, creed, age, sexual orientation, national origin, disability or class.